



WOODBURY

MOSCOW, IDAHO



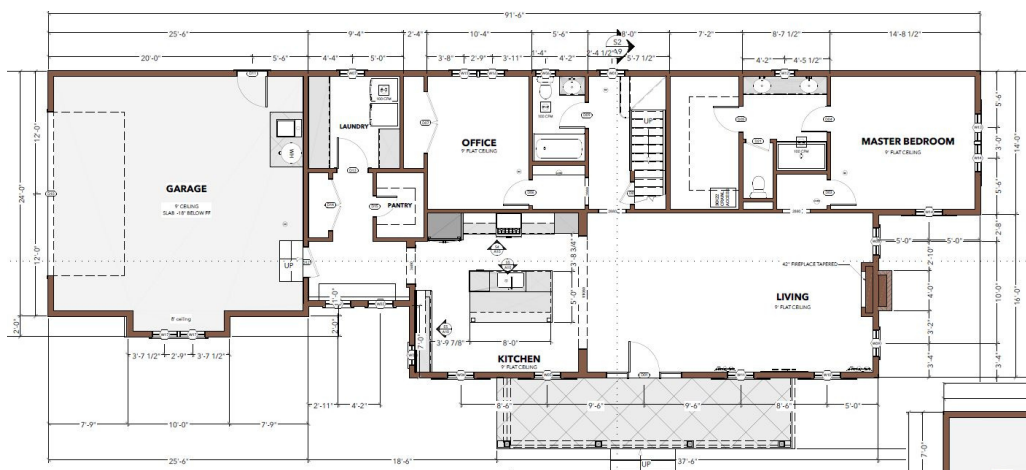
Sycamore - Garden Lot

Sycamore's large front porch is the perfect place for people watching! A swooped roofline and symmetrical dormers make a statement from the exterior while it includes an open living area that transitions into a more partitioned floor plan for privacy throughout the rest of the interior.

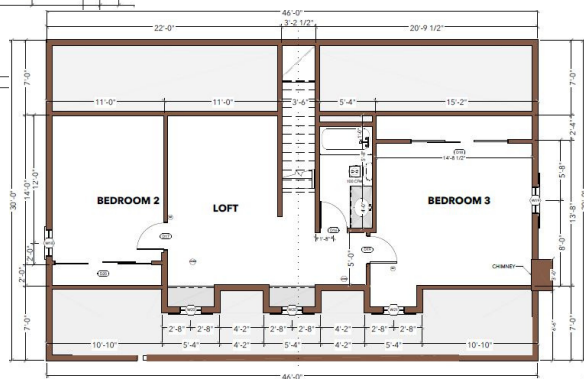
2,458 SQ FT | 4 Bedrooms | 3 Bathrooms

Price: Starting from \$729,000

*Subject to change



MAIN FLOOR



UPSTAIRS

WOODBURYMOSCOW.COM



@woodburymoscow

In an effort to improve our homes, Wintz Company, LLC reserves the right to make changes without notice. Floor plans and renderings are conceptual and may vary from actual plans and homes as built. Options and features may not be available on all homes and are subject to change without notice. Square footage numbers are approximate and subject to change without notice. Prices, specifications and availability are subject to change without notice. Actual homes may vary from photos and/or drawings which show upgraded landscaping and may not represent the lowest priced homes in the community.





WOODBURY

MOSCOW, IDAHO



Sycamore - Interior

All interior renderings are conceptual, fixtures and finishes may not be representative of the home listed.

LIVING ROOM



KITCHEN



DINING

WOODBURYMOSCOW.COM



@woodburymoscow

In an effort to improve our homes, Wintz Company, LLC reserves the right to make changes without notice. Floor plans and renderings are conceptual and may vary from actual plans and homes as built. Options and features may not be available on all homes and are subject to change without notice. Square footage numbers are approximate and subject to change without notice. Prices, specifications and availability are subject to change without notice. Actual homes may vary from photos and/or drawings which show upgraded landscaping and may not represent the lowest priced homes in the community.