



WOODBURY

MOSCOW, IDAHO

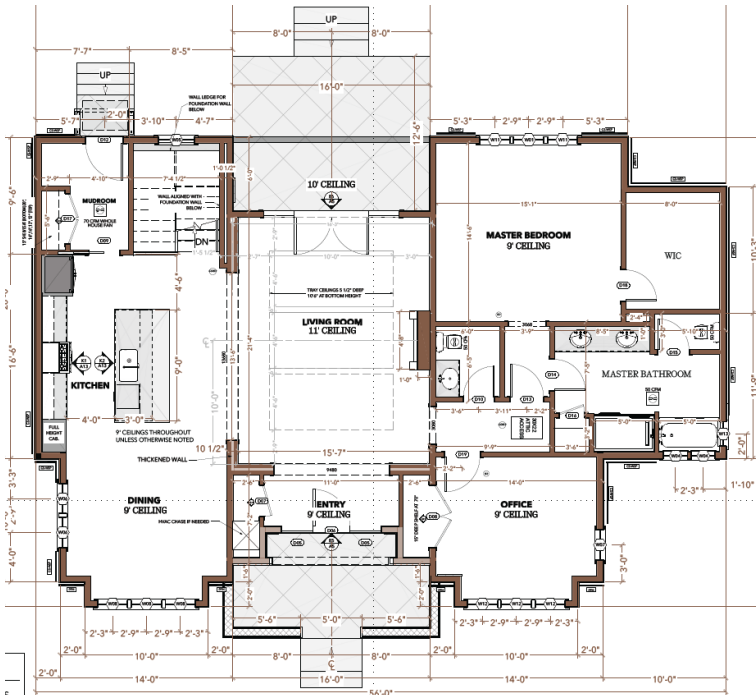


Sky Haven - Garden Lot

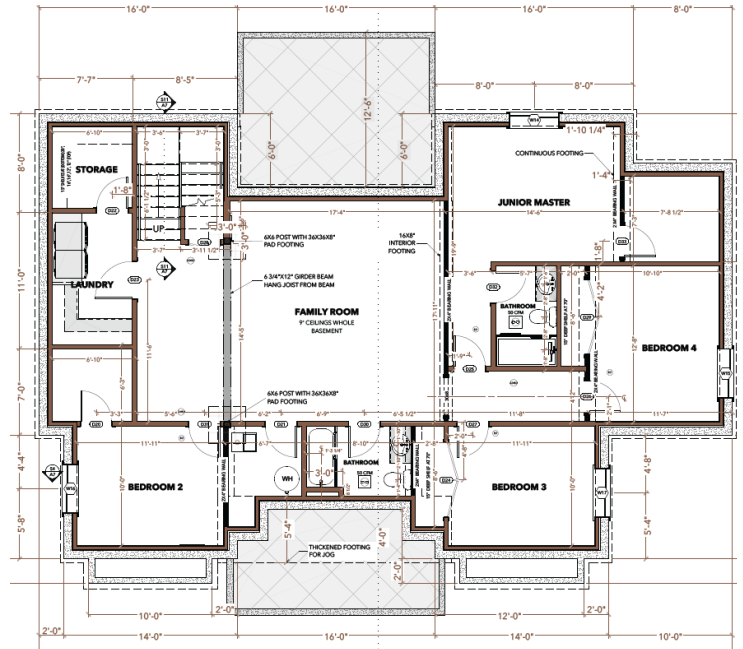
A symmetrical double-peaked house with a grand living room, multiple flex spaces, and a large basement. This open floor plan is ideal for people who want all their main amenities on the first level with ample space to stretch out downstairs as well.

3,409 SQ FT | 6 Bedrooms | 3.5 Bathrooms

Price: TBD No Price New Construction



MAIN FLOOR



BASEMENT



WOODBURY

MOSCOW, IDAHO

Sky Haven Location - 1428 Woodbury Drive



WOODBURYMOSCOW.COM



@woodburymoscow

In an effort to improve our homes, Wintz Company, LLC reserves the right to make changes without notice. Floor plans and renderings are conceptual and may vary from actual plans and homes as built. Options and features may not be available on all homes and are subject to change without notice. Square footage numbers are approximate and subject to change without notice. Prices, specifications and availability are subject to change without notice. Actual homes may vary from photos and/or drawings which show upgraded landscaping and may not represent the lowest priced homes in the community.



WOODBURY

MOSCOW, IDAHO



Sky Haven - Interior

All interior renderings are conceptual, fixtures and finishes may not be representative of the home listed.

LIVING ROOM



KITCHEN/DINING



MASTER BEDROOM

WOODBURYMOSCOW.COM



@woodburymoscow

In an effort to improve our homes, Wintz Company, LLC reserves the right to make changes without notice. Floor plans and renderings are conceptual and may vary from actual plans and homes as built. Options and features may not be available on all homes and are subject to change without notice. Square footage numbers are approximate and subject to change without notice. Prices, specifications and availability are subject to change without notice. Actual homes may vary from photos and/or drawings which show upgraded landscaping and may not represent the lowest priced homes in the community.