



# WOODBURY

MOSCOW, IDAHO



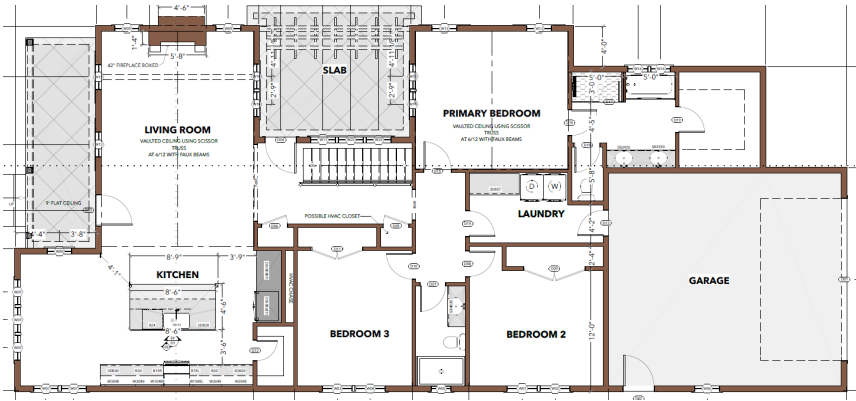
## Surrey - Garden Lot

This floorplan is one of the only fully single-story plans within the development. It greets you with a bright living room and kitchen that opens onto a covered patio. Tall ceilings with vaults in the living room and master bedroom. There are three bedrooms on the main floor and an option to build out the basement to gain additional three bedrooms downstairs along with a large rec room and additional storage.

**Option A - Fully Finished Basement:**  
3,781 SQ FT | 6 Bedrooms | 3 Bathroom

**Option B - Partially Finished Basement:**  
Approx. 2,525 SQ FT | 3 Bedrooms | 2 Bathrooms

Price: TBD No Price New Construction

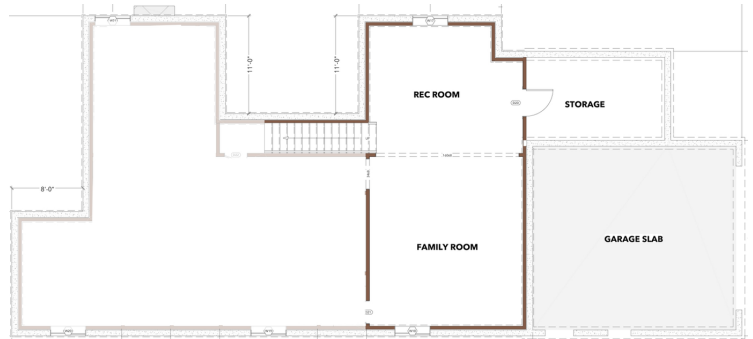


MAIN FLOOR

BASEMENT-OPTION A



BASEMENT-OPTION B





# WOODBURY

MOSCOW, IDAHO

## Surrey Location - 1442 Woodbury Drive







# WOODBURY

MOSCOW, IDAHO



## *Surrey - Interior*

All interior renderings are conceptual, fixtures and finishes may not be representative of the home listed.

LIVING ROOM



KITCHEN



LIVING/KITCHEN