



# WOODBURY

MOSCOW, IDAHO



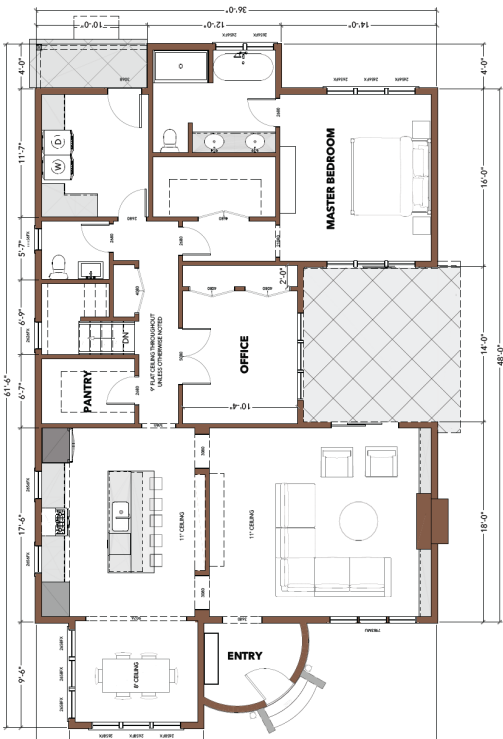
## Yalecrest - Garden Lot

This Euro-eclectic design has a prominent turreted entryway that gives way to a desirable floorplan which includes a bright dining room, main floor master bedroom and office, a 3/4 enclosed side patio, and a large and efficient basement which has a bonus family room.

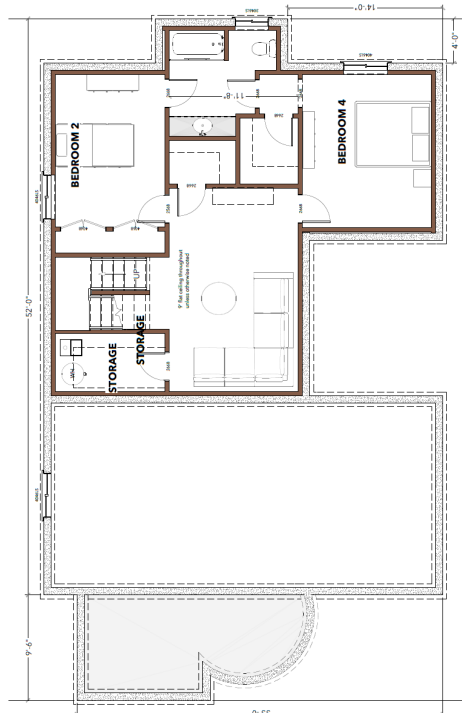
**Option A - Partially Finished Basement:**  
2,713 SQ FT | 4 Bedrooms | 2.5 Bathrooms

**Option B - Fully Finished Basement:**  
3,511 SQ FT | 5 Bedrooms | 2.5 Bathrooms

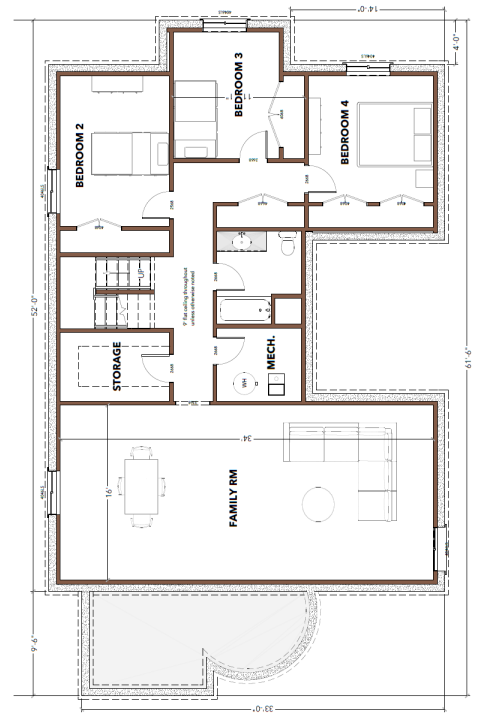
Price: TBD No Price New Construction



MAIN FLOOR



BASEMENT-OPTION A



BASEMENT-OPTION B

WOODBURYMOSCOW.COM



@woodburymoscow

In an effort to improve our homes, Wintz Company, LLC reserves the right to make changes without notice. Floor plans and renderings are conceptual and may vary from actual plans and homes as built. Options and features may not be available on all homes and are subject to change without notice. Square footage numbers are approximate and subject to change without notice. Prices, specifications and availability are subject to change without notice. Actual homes may vary from photos and/or drawings which show upgraded landscaping and may not represent the lowest priced homes in the community.



# WOODBURY

MOSCOW, IDAHO

## Yalecrest Location - 1436 Woodbury Drive



WOODBURYMOSCOW.COM



@woodburymoscow

In an effort to improve our homes, Wintz Company, LLC reserves the right to make changes without notice. Floor plans and renderings are conceptual and may vary from actual plans and homes as built. Options and features may not be available on all homes and are subject to change without notice. Square footage numbers are approximate and subject to change without notice. Prices, specifications and availability are subject to change without notice. Actual homes may vary from photos and/or drawings which show upgraded landscaping and may not represent the lowest priced homes in the community.



# WOODBURY

MOSCOW, IDAHO



## *Yalecrest - Interior*

All interior renderings are conceptual, fixtures and finishes may not be representative of the home listed.

LIVING ROOM



KITCHEN



LIVING/KITCHEN